

6. Plan Area

Section Overview

This section describes the geographic area to which the Republican River Basin-Wide Plan (Plan) applies.

Plan Area

The Plan will examine and make recommendations for the entire Republican River Basin. Surface water funding and studies may apply specifically to the hydrologically connected area for surface water. Groundwater funding and studies may apply specifically to the hydrologically connected area for groundwater, the extent of which is defined by the Nebraska Department of Natural Resources (NeDNR)

(as shown in Figure 6.1). During the time frame of the Plan, it may become necessary to revise the extent of the area where groundwater funding and studies may apply to remain consistent with updates to the extent of the hydrologically connected area defined by NeDNR. If future revisions to the Plan include the addition of controls, the geographic areas described above would also apply to those controls.

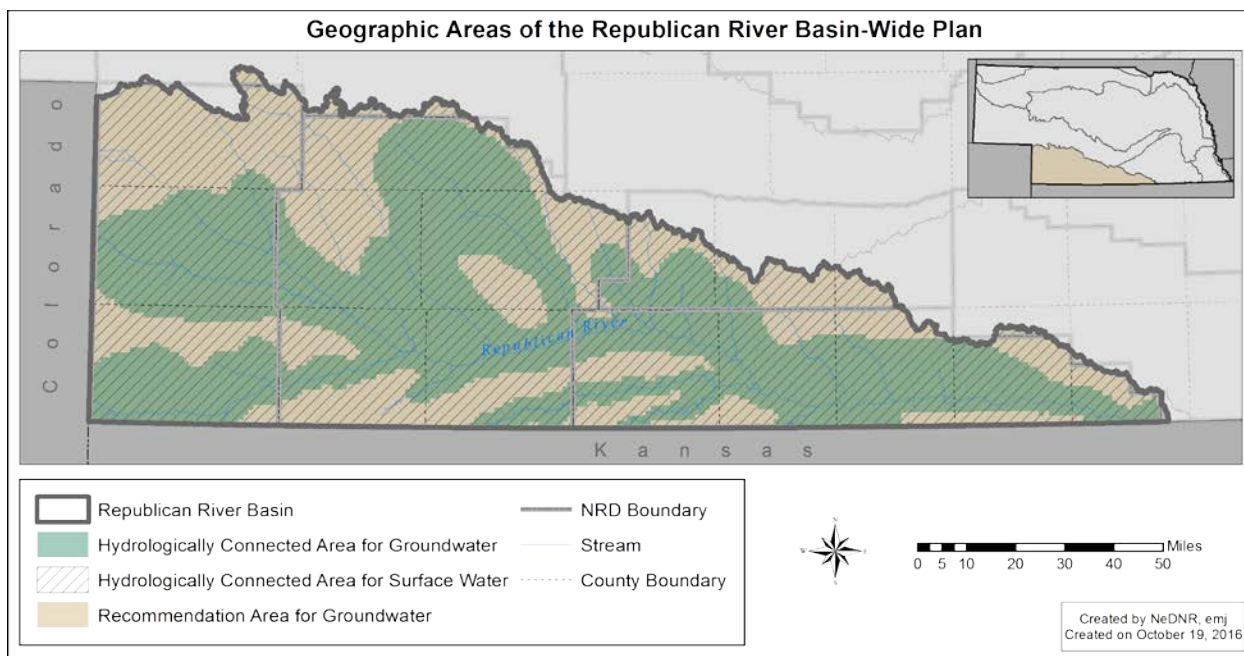


Figure 6.1. Geographic areas to which Plan actions related to groundwater and surface water apply. The hydrologically connected area for groundwater shown in this map is the area determined by NeDNR to be hydrologically connected according to NeDNR's 10-50 rule, as of the effective date of this plan.