

## 6. Plan Area

### Section Overview

This section describes the geographic area to which the Republican River Basin-Wide Plan (Plan) applies.

### Plan Area

The Plan will examine and make recommendations for the entire Republican River Basin. Surface water funding and studies may apply specifically to the hydrologically connected area for surface water. Groundwater funding and studies may apply specifically to the hydrologically connected area for groundwater, the extent

of which is defined by the Nebraska Department of Natural Resources (as shown in Figure 6.1). If future revisions to the Plan include the addition of controls, the geographic areas described above would also apply to those controls.

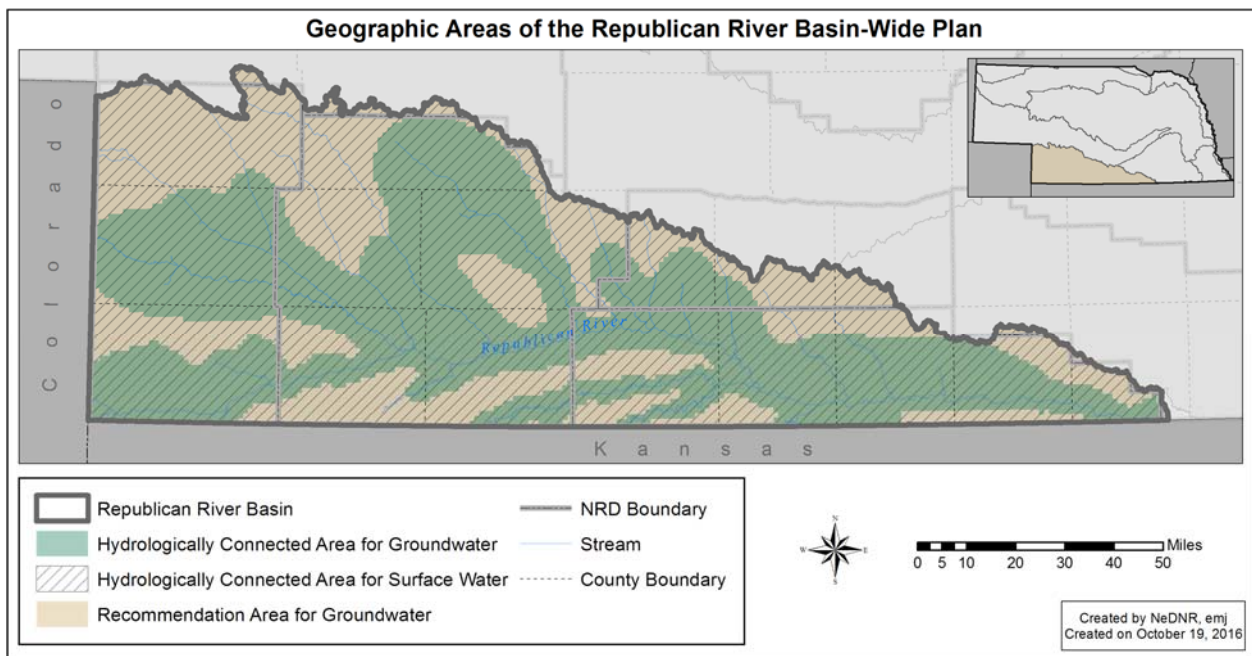


Figure 6.1. Geographic areas to which Plan actions related to groundwater and surface water apply.